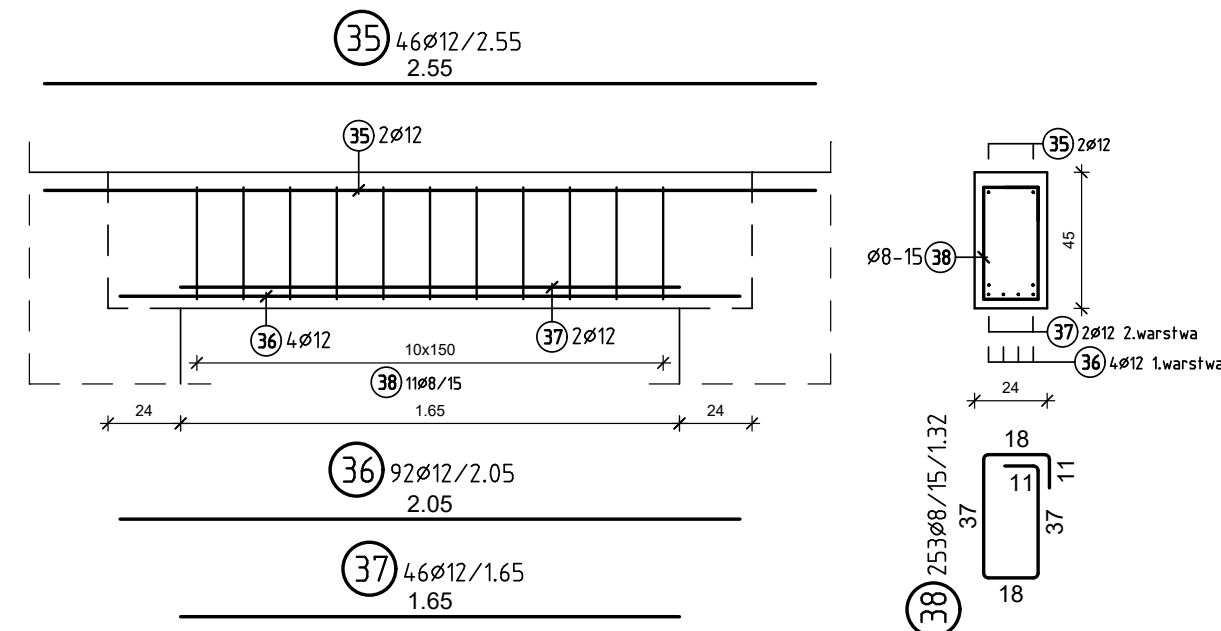


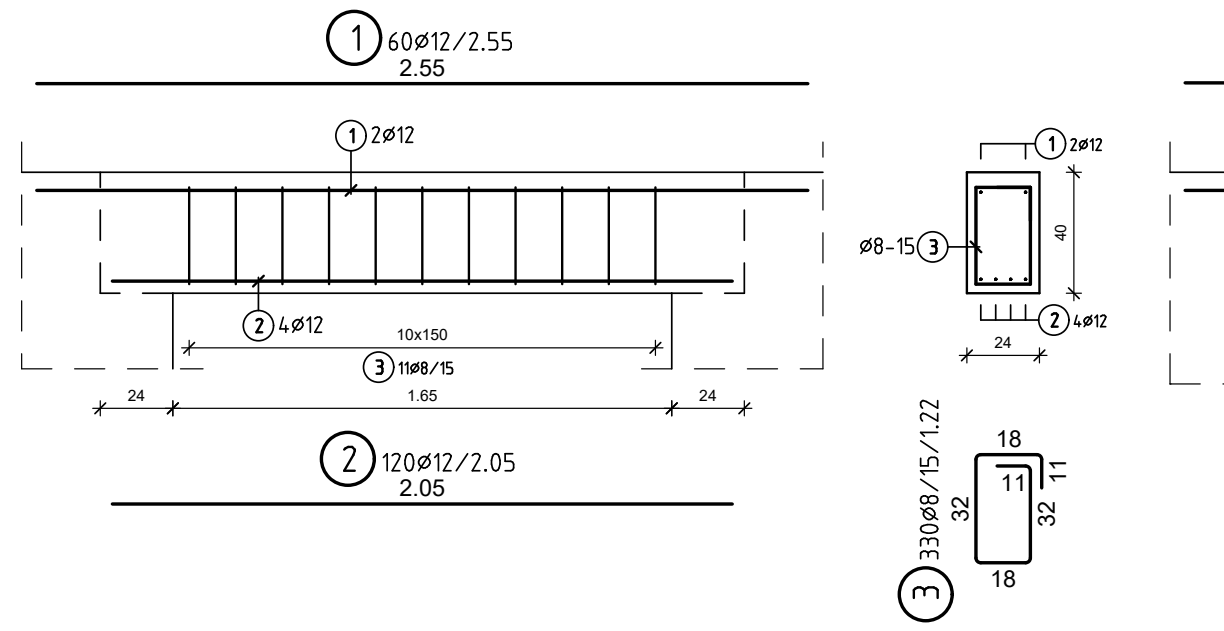
Np-1 (24x45)

Beton C25/30 (B25)
szt. 23
SKALA 1:25



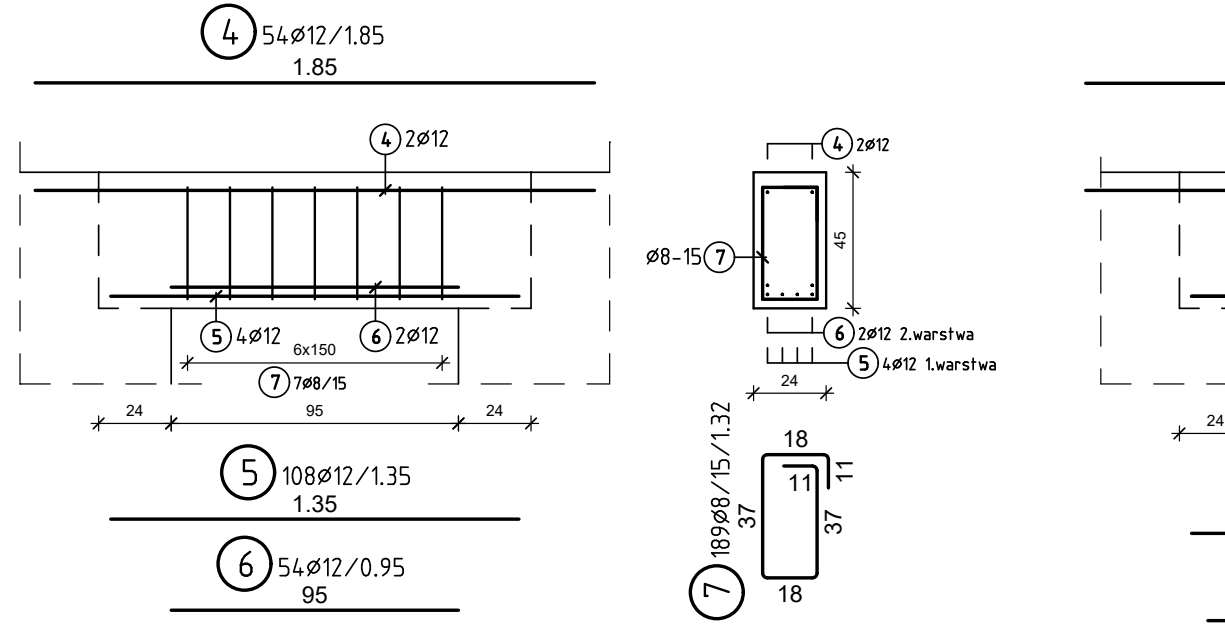
Np-2 (24x40)

Beton C25/30 (B25)
szt. 30
SKALA 1:25



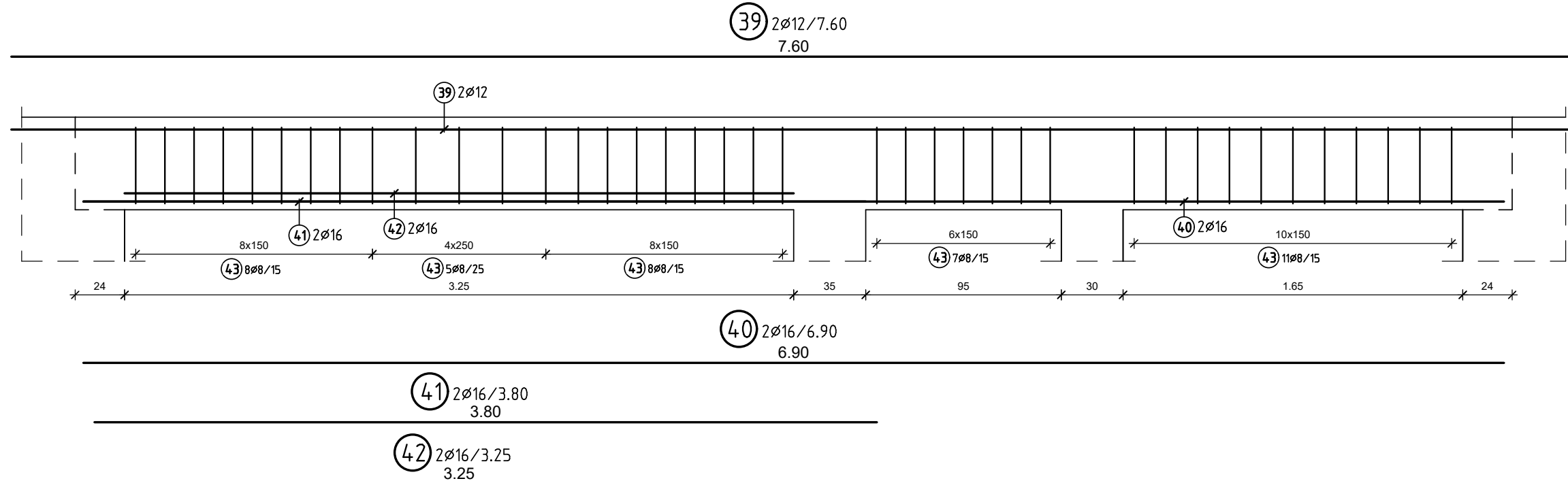
Np-3 (24x45)

Beton C25/30 (B25)
szt. 27
SKALA 1:25



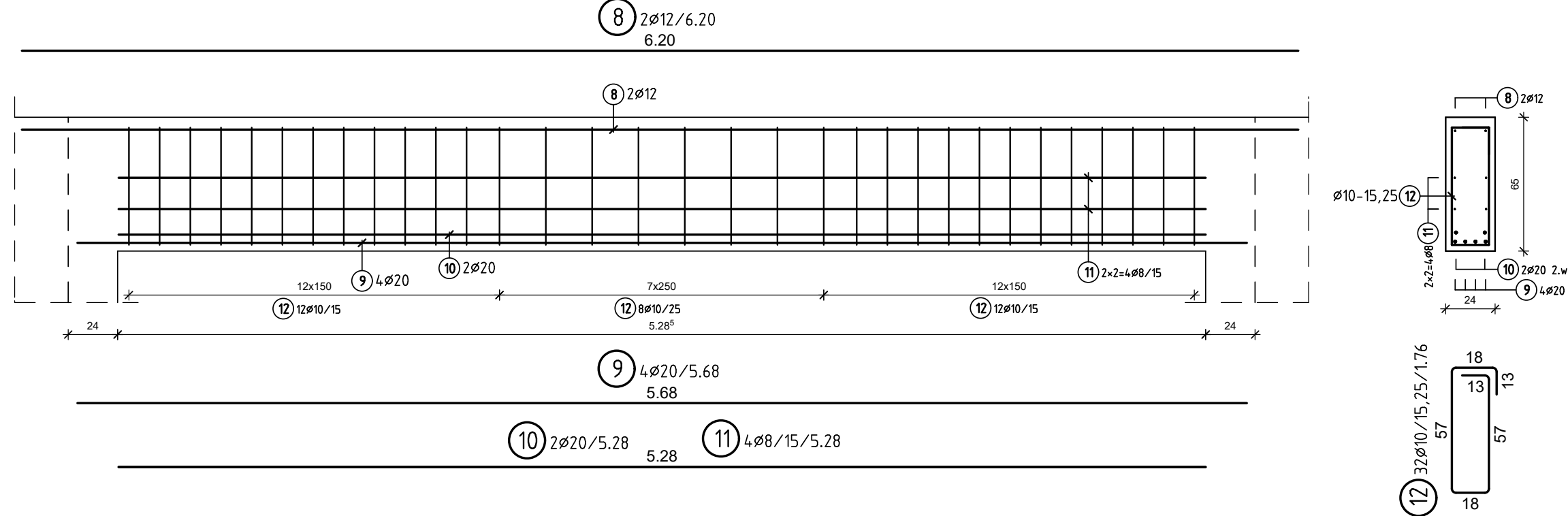
Np-4 (24x45)

Beton C25/30 (B25)
szt. 1
SKALA 1:25



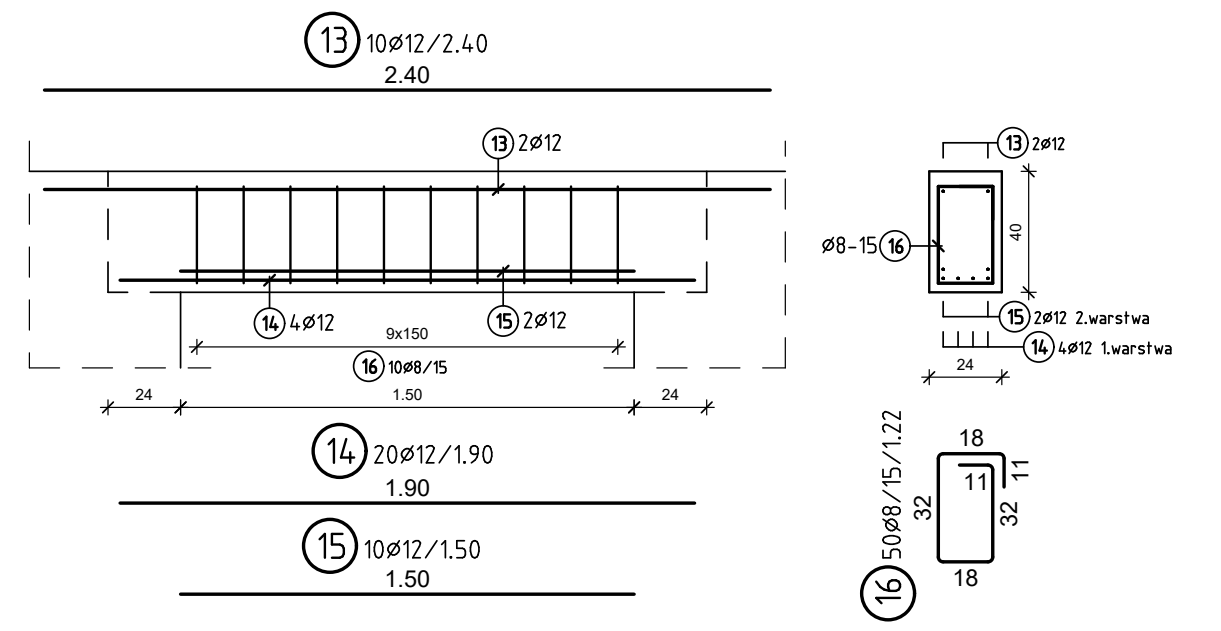
Np-5 (24x65)

Beton C25/30 (B25)
szt. 1
SKALA 1:25



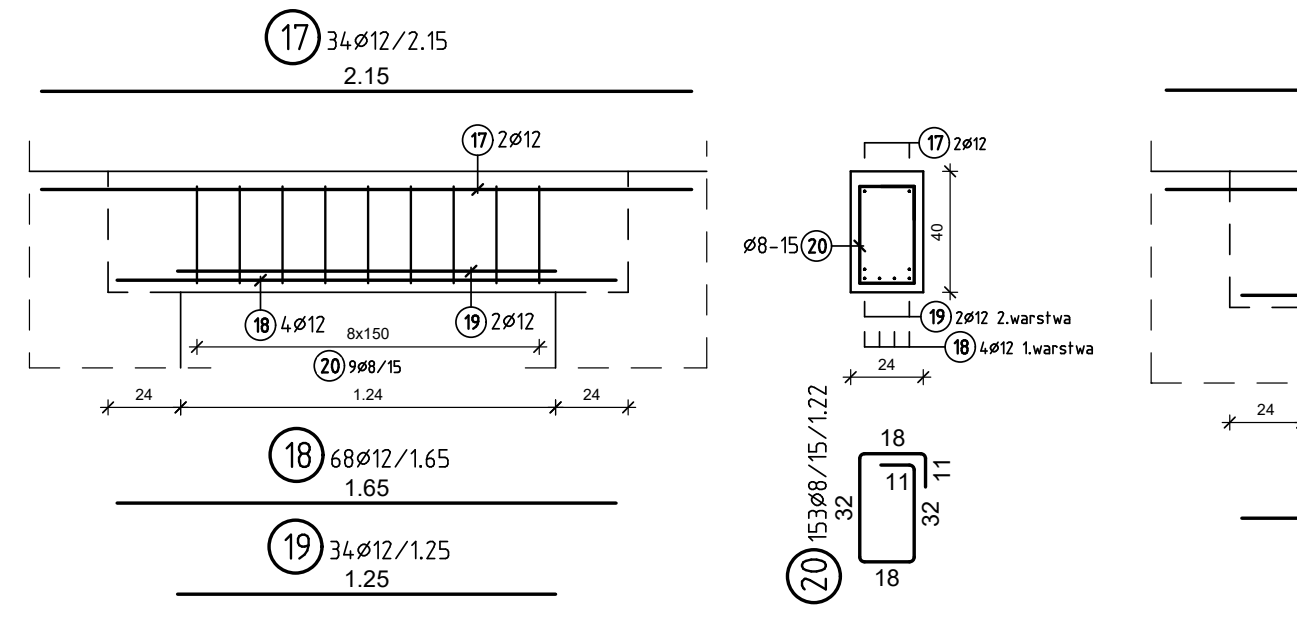
Np-6 (24x40)

Beton C25/30 (B25)
szt. 5
SKALA 1:25



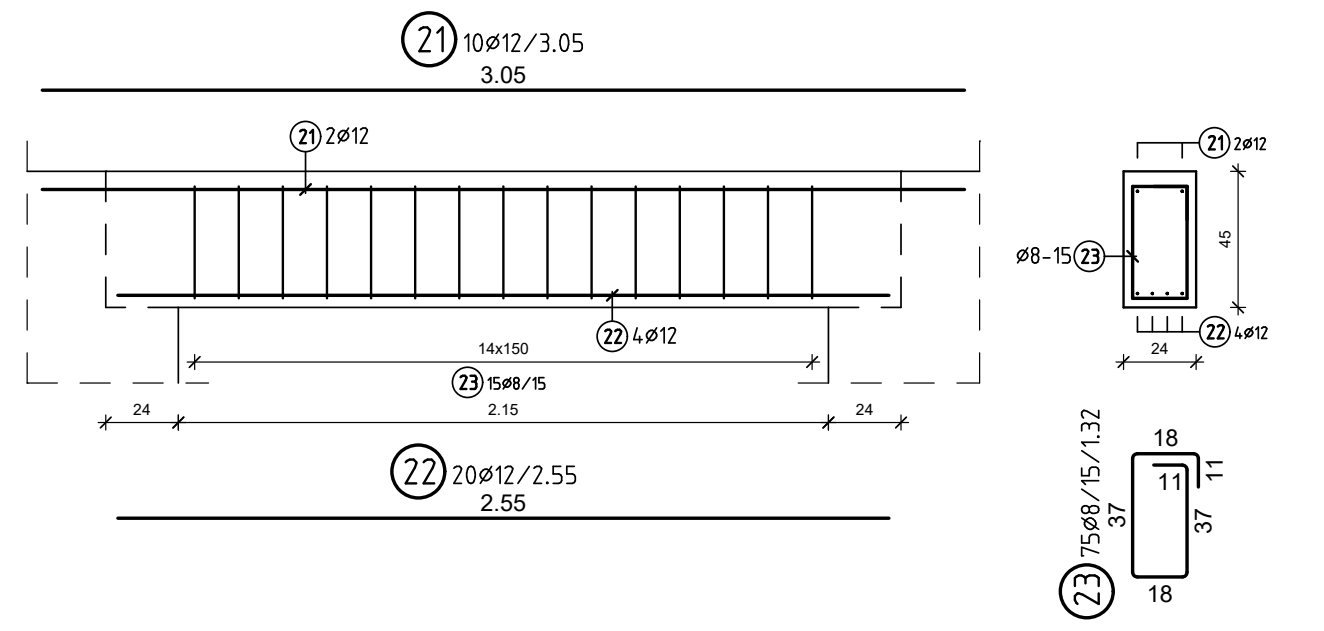
Np-7 (24x40)

Beton C25/30 (B25)
szt. 17
SKALA 1:25



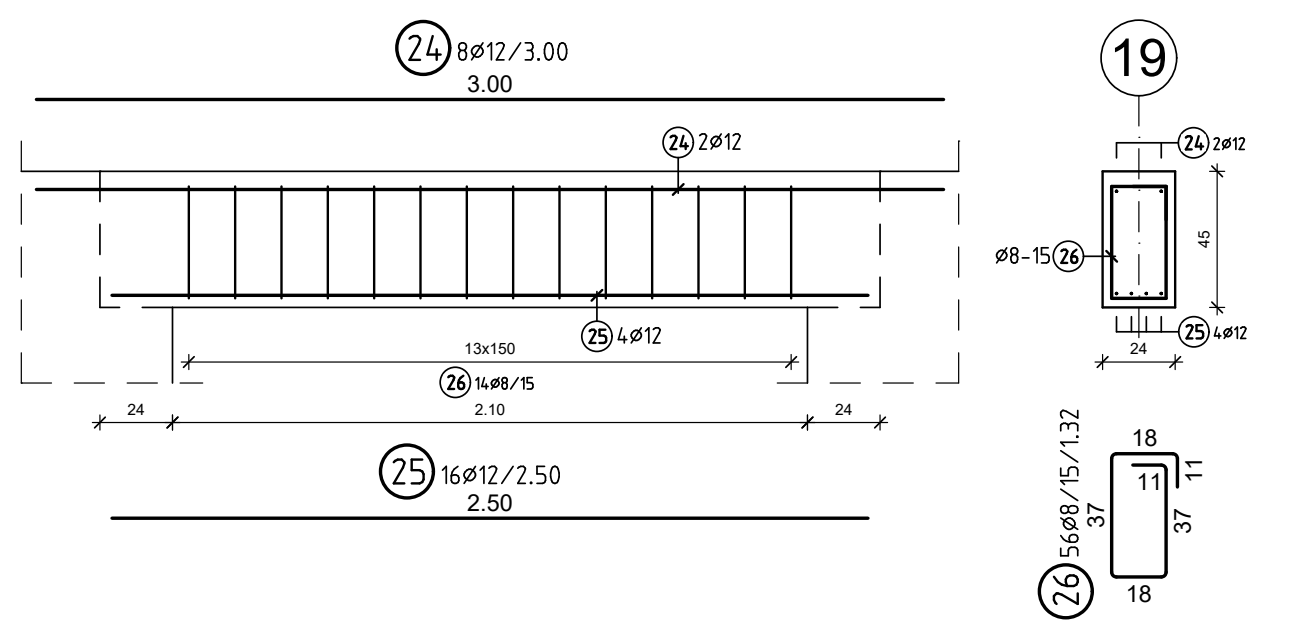
Np-8 (24x45)

Beton C25/30 (B25)
szt. 5
SKALA 1:25



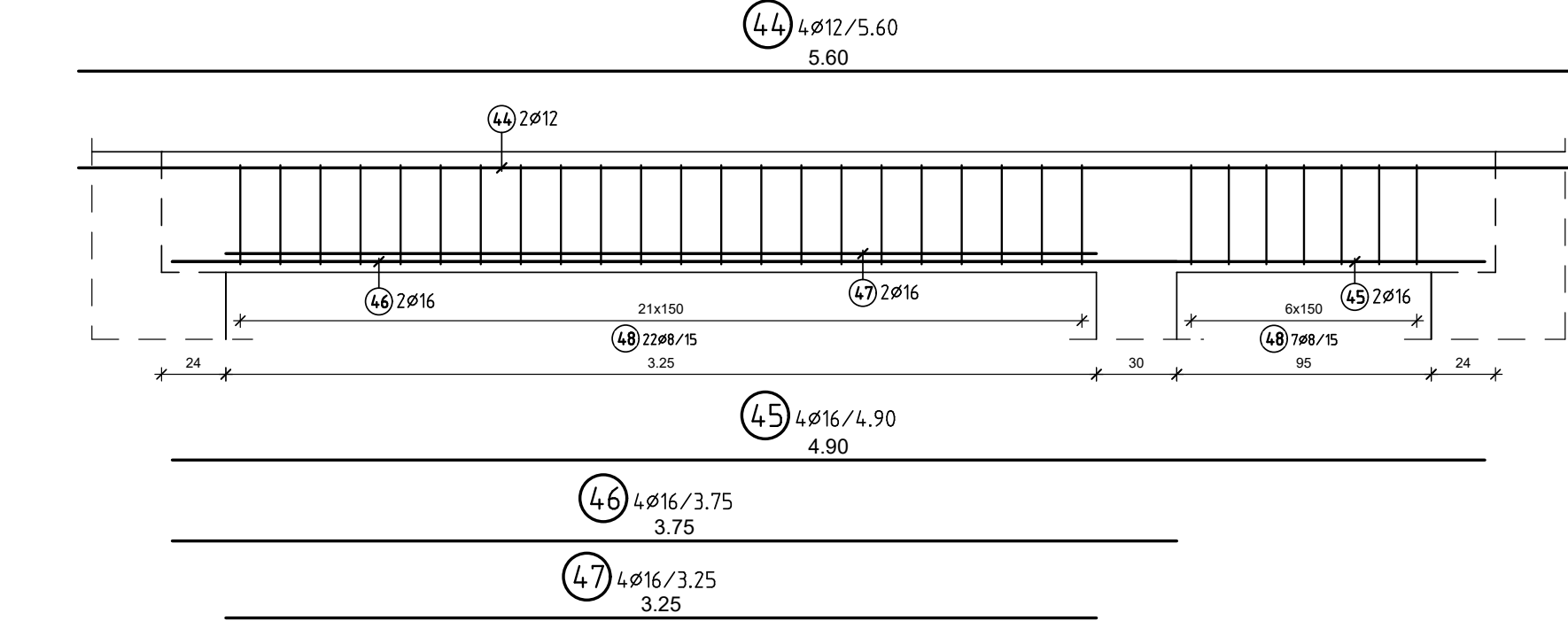
Np-9 (24x45)

Beton C25/30 (B25)
szt. 4
SKALA 1:25



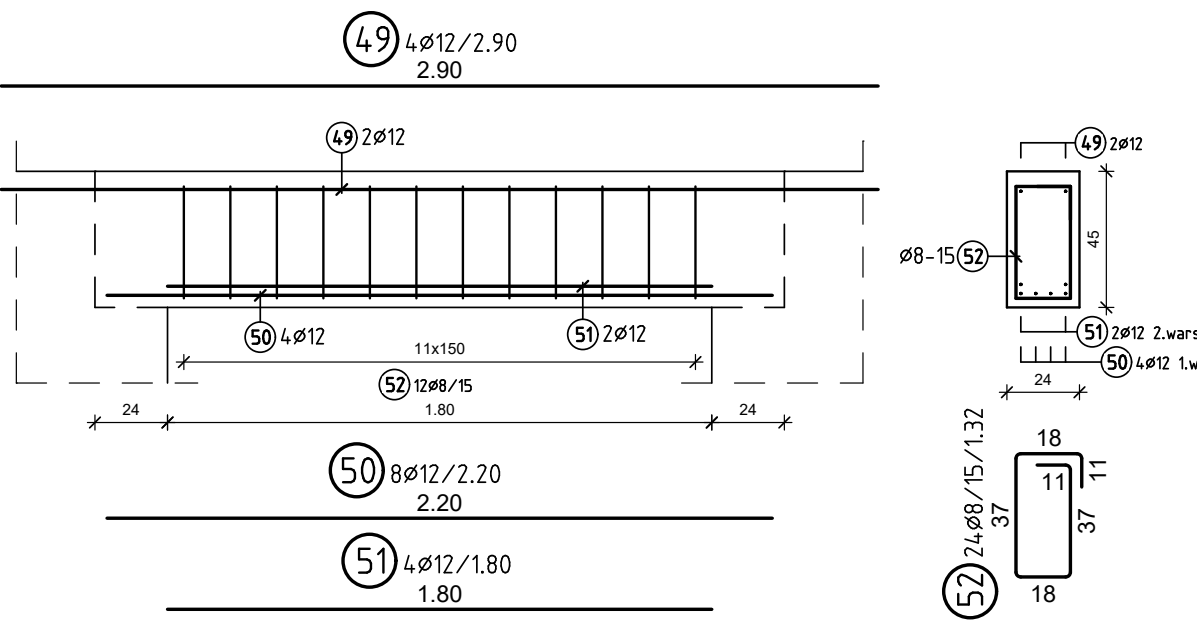
Np-10 (24x45)

Beton C25/30 (B25)
szt. 2
SKALA 1:25



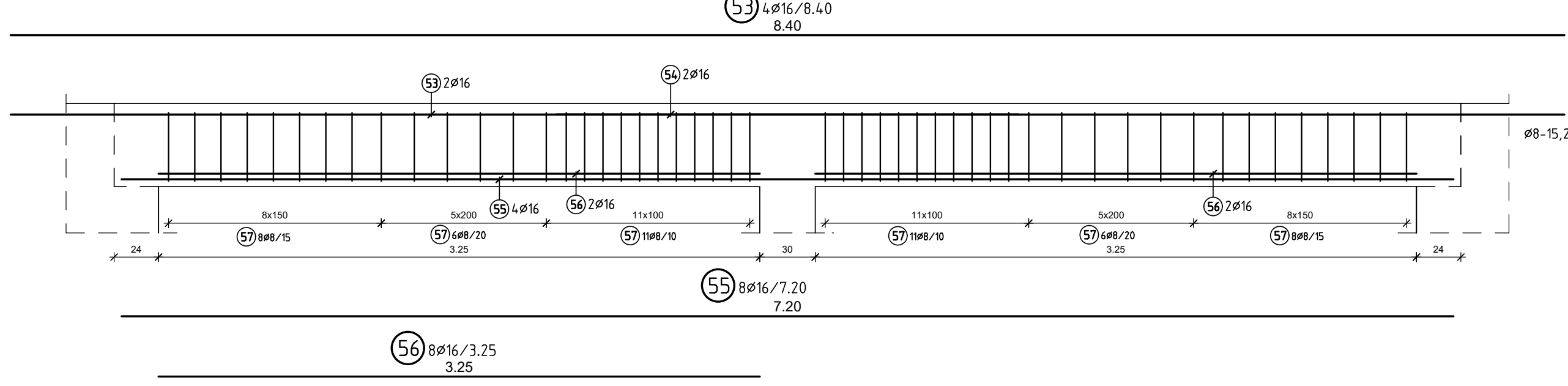
Np-12 (24x45)

Beton C25/30 (B25)
szt. 2
SKALA 1:25



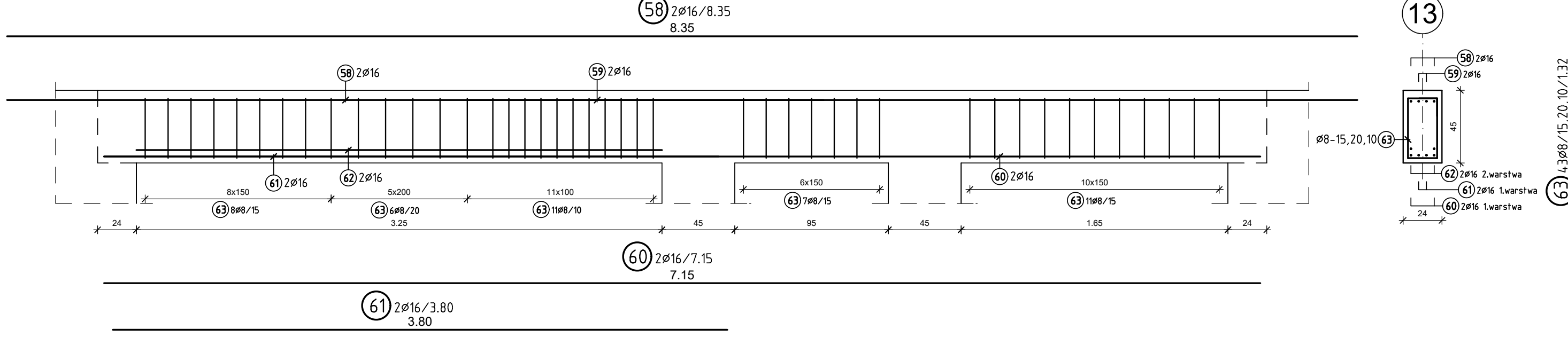
Np-13 (24x45)

Beton C25/30 (B25)
szt. 2
SKALA 1:25



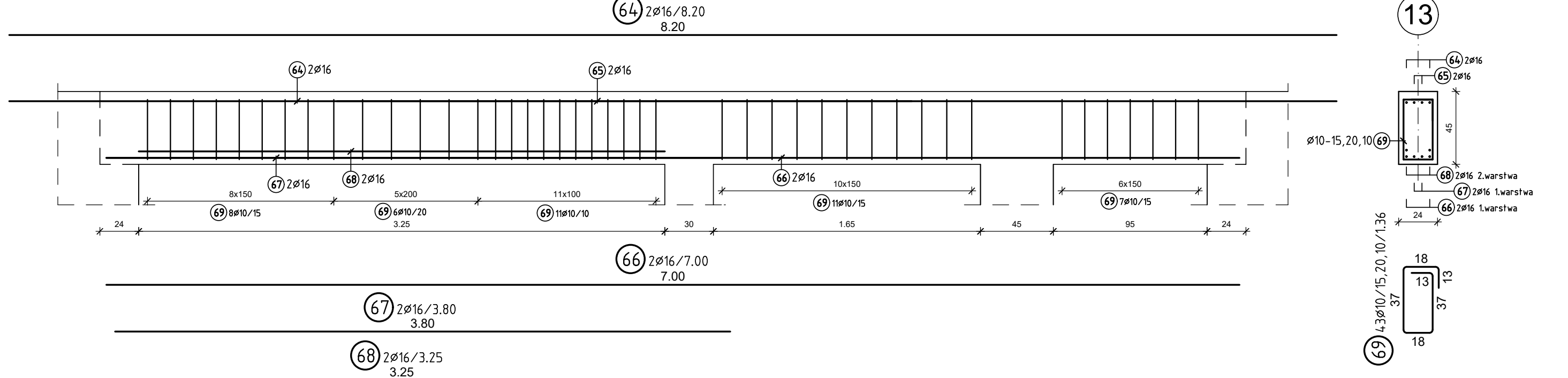
Np-14 (24x45)

Beton C25/30 (B25)
szt. 1
SKALA 1:25



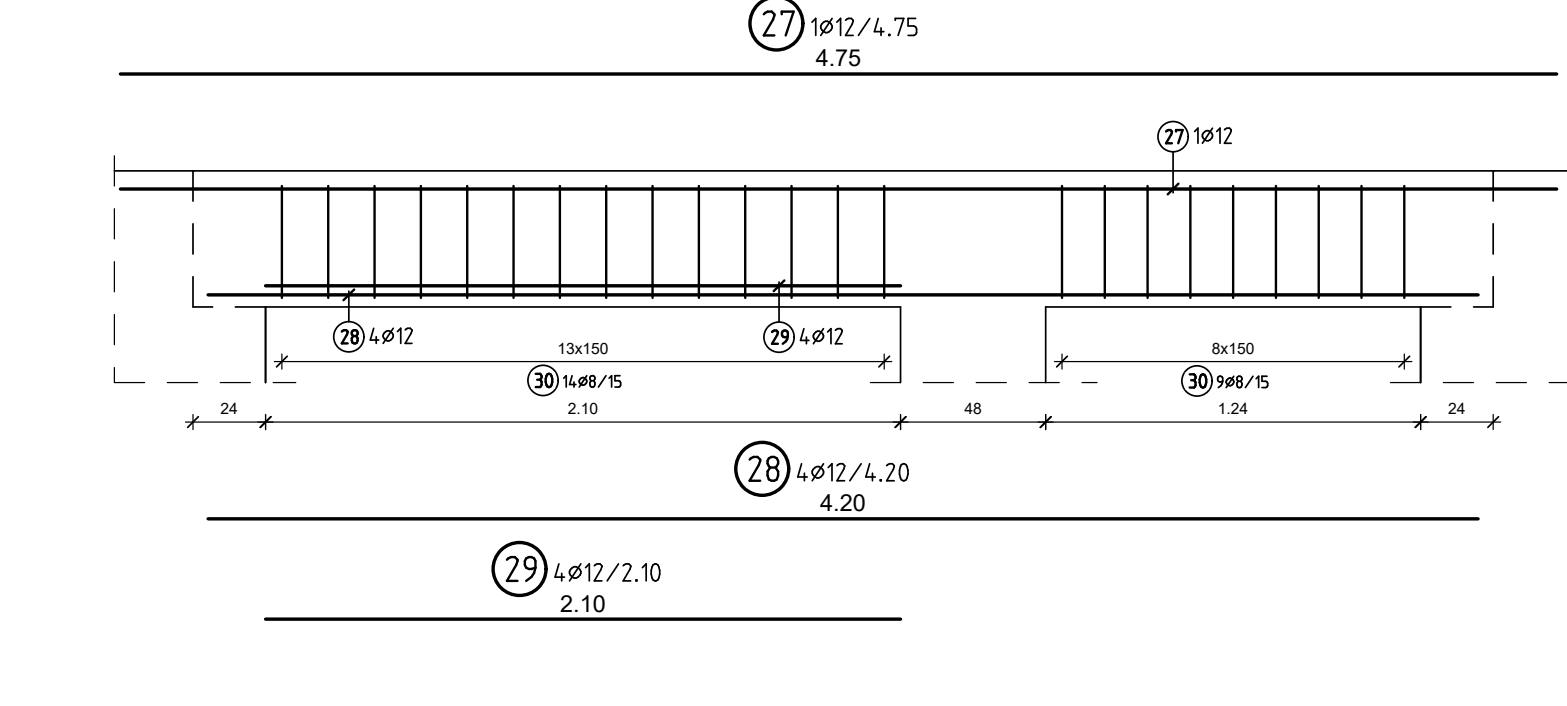
Np-15 (24x45)

Beton C25/30 (B25)
szt. 1
SKALA 1:25



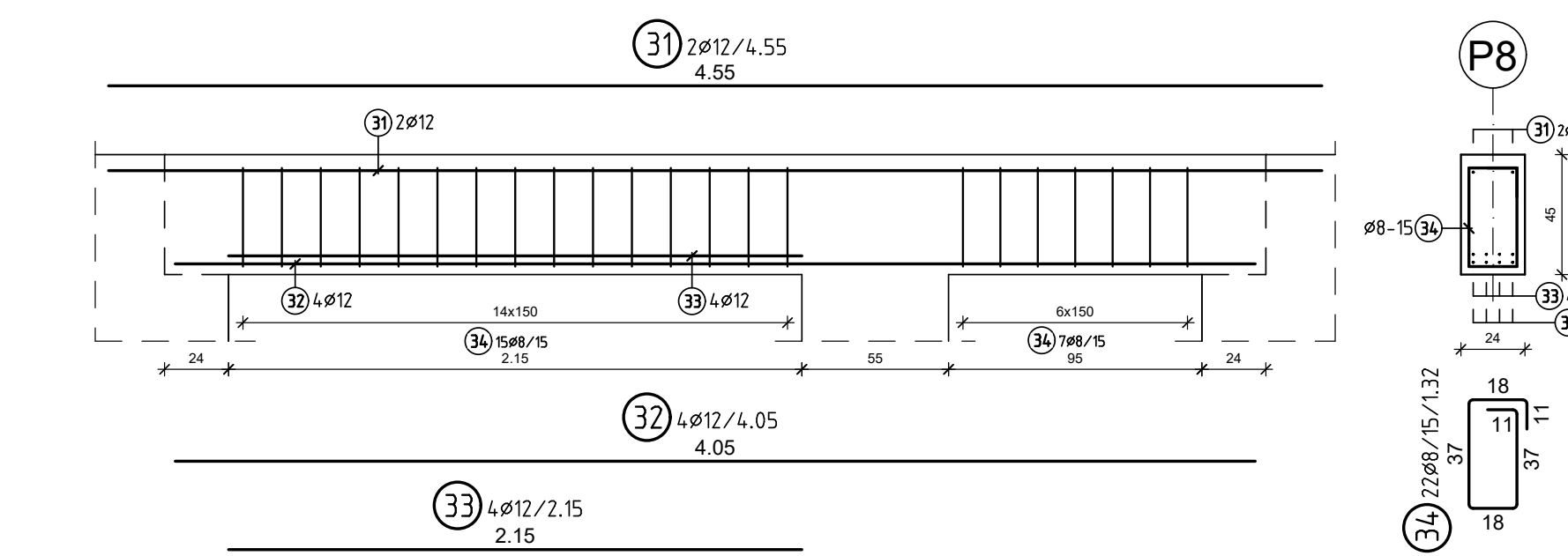
Np-16 (24x45)

Beton C25/30 (B25)
szt. 1
SKALA 1:25



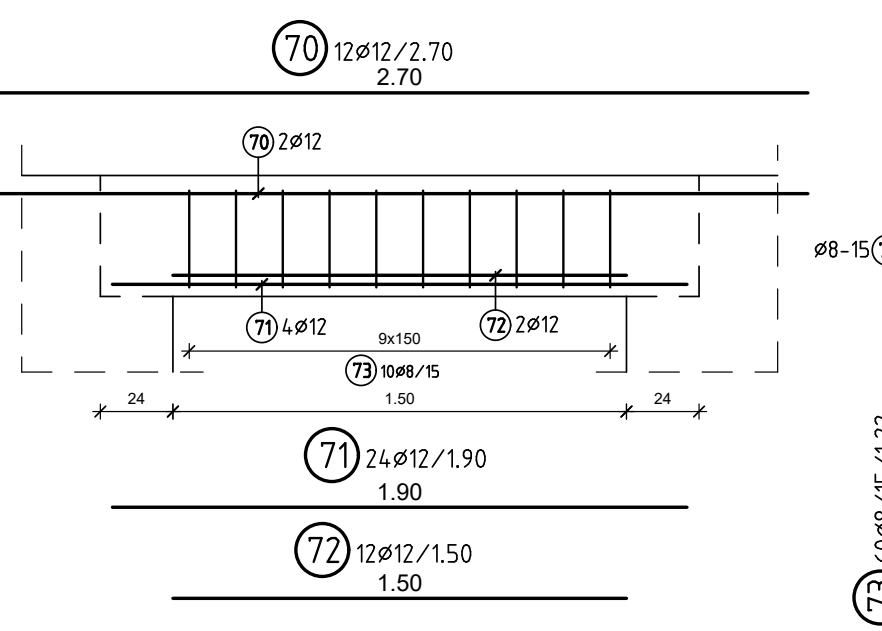
Np-17 (24x45)

Beton C25/30 (B25)
szt. 1
SKALA 1:25



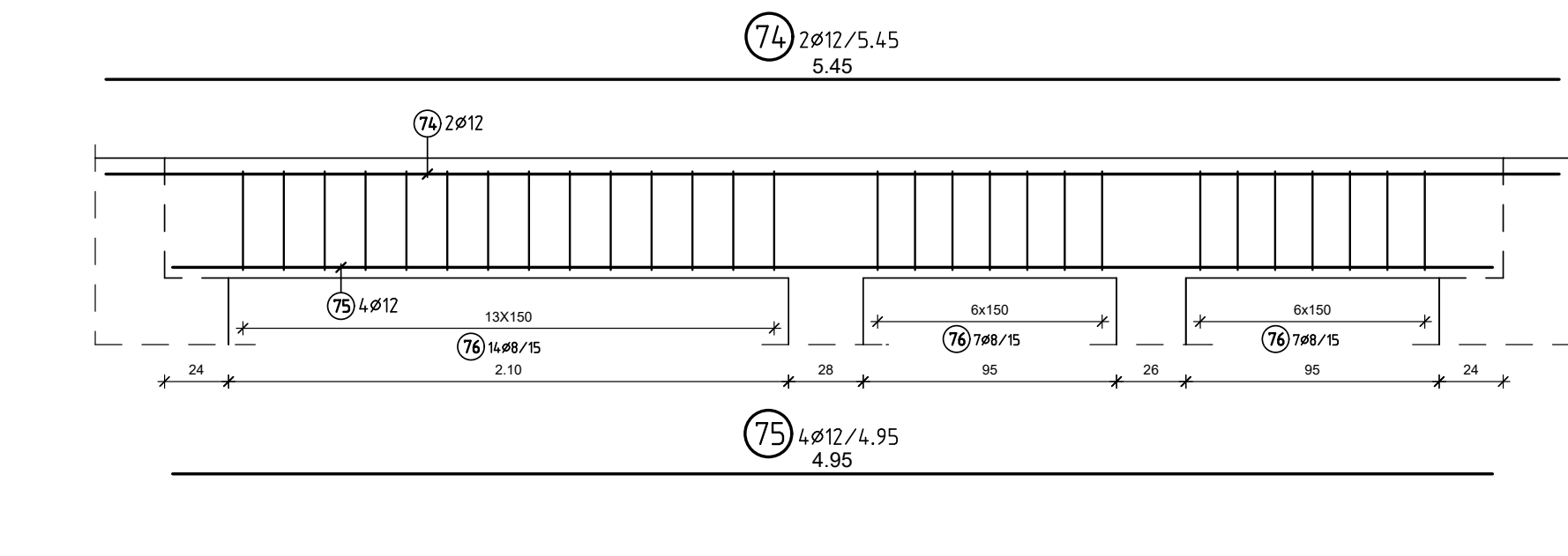
Np-18 (24x40)

Beton C25/30 (B25)
szt. 6
SKALA 1:25



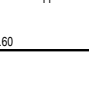
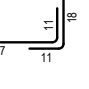
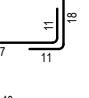
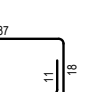
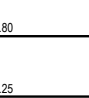
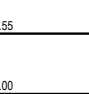
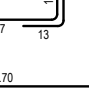
Np-19 (24x45)

Beton C25/30 (B25)
szt. 1
SKALA 1:25



B500B						
Poz.	Ilość	f	Szerokość	Uwa.:	Poz.	Ilość
2	60	12	2,55		39	2
2	120	12	2,55		40	2
3	330	8	1,22		41	2
4	54	12	1,85		42	2
5	108	12	1,35		43	39
6	54	12	0,95		44	4
7	189	8	1,32		45	4
8	2	12	6,20		46	4
9	4	20	5,68		47	4
10	2	20	5,28		48	58
11	4	8	5,28		49	4
12	32	10	1,76		50	8
13	10	12	2,40		51	4
14	20	12	1,90		52	24
15	10	12	1,50		53	4
16	50	8	1,22		54	4
17	34	12	2,15		55	8
18	68	12	1,65		56	8
19	34	12	1,25		57	100
20	120	12	2,55		58	2
21	10	12	3,05		59	2
22	20	12	2,55		60	2
23	75	8	1,32		61	2
24	8	12	3,00		62	2
25	16	12	2,50		63	43
26	56	8	1,32		64	2
27	1	12	4,75		65	2
28	4	12	4,20		66	2
29	4	12	2,10		67	2
30	23	8	1,32		68	2
31	2	12	4,55		69	43
32	4	12	4,05		70	12
33	4	12	1,50		71	24
34	22	6	1,32		72	12
35	46	12	2,55		73	60
36	92	12	2,05		74	2
37	46	12	1,65		75	4
38	253	8	1,32		76	28
f (mm) L (m) G(kg)				f (mm) L (m) G(kg)		
8 1945,78 768,583				10 114,80 70,832		
12 190,05 1602,884				16 303,80 480,034		
20 33,28 82,202						
Ciężar całkowity 3004,555 kg						

Poz	Ilość	f	Długość	Waga	B500B	Poz	Ilość	f	Długość	Waga	B500B
1	60	12	2,55	153,00		39	2	12	7,60	15,30	
2	120	12	2,55	246,00		40	2	16	6,90	13,80	
3	330	6	1,22	402,00		41	2	16	3,80	7,60	
4	54	12	1,85	99,90		42	2	16	3,25	6,50	
5	108	12	1,35	145,80		43	39	8	1,32	51,48	4
6	54	12	0,95	51,30		44	4	12	5,60	22,40	
7	189	6	1,32	249,48		45	4	16	4,50	19,60	
8	2	12	6,20	12,40		46	4	16	3,75	15,00	
9	4	20	5,68	22,72		47	4	16	3,25	13,00	
10	2	20	5,28	10,56		48	58	8	1,32	75,56	4
11	4	8	5,28	21,12		49	4	12	2,90	11,60	
12	32	10	1,76	56,32		50	8	12	2,20	17,60	
13	10	12	2,40	24,00		51	4	12	1,80	7,20	
14	20	12	1,90	38,00		52	24	8	1,32	31,68	4
15	10	12	1,50	15,00		53	4	16	8,40	33,60	
16	50	8	1,22	61,00		54	4	16	2,50	10,00	
17	34	12	2,15	73,10		55	8	16	7,20	57,60	
18	68	12	1,65	112,20		56	8	16	3,25	26,00	
19	34	12	1,25	42,50		57	100	8	1,32	132,00	4
20	120	12	2,55	153,00		58	2	16	6,20	15,70	
21	10	12	3,05	30,50		59	2	16	2,20	4,40	
22	20	12	2,55	51,00		60	2	16	7,15	14,30	
23	75	8	1,32	99,00		61	2	16	3,80	7,60	
24	8	12	3,00	24,00		62	2	16	3,25	6,50	
25	16	12	2,50	40,00		63	43	8	1,32	56,76	4
26	56	8	1,32	73,92		64	2	16	8,20	16,40	
27	1	12	4,75	4,75		65	2	16	3,55	7,10	
28	4	12	4,20	16,80		66	2	16	7,00	14,00	
29	4	12	2,10	8,40		67	2	16	3,80	7,60	
30	23	8	1,32	30,36		68	2	16	3,25	6,50	
31	2	12	4,55	9,10		69	43	10	1,36	58,48	4
32	4	12	4,05	16,20		70	12	12	2,70	32,40	
33	4	12	1,50	6,00		71	24	12	1,50	45,60	
34	22	6	1,32	29,04		72	12	12	1,50	18,00	
35	46	12	2,55	117,30		73	60	8	1,22	73,20	4
36	92	12	2,05	117,30		74	2	12	5,45	10,90	
37	46	12	1,65	68,70		75	4	12	4,95	19,80	
38	253	8	1,32	333,96		76	28	8	1,32	36,96	4

Uwagi B500B	Poz №	Ilość	f	Długość m	Ważenie kg	Prz m²	Wymiary zewnętrzne i geometryczne Zapisać według SN 262 / EC2	Uwagi B500B
	39	2	12	7,60	15,20		_____	
	40	2	16	6,90	13,80		_____	
	41	2	16	3,80	7,60		_____	
	42	2	16	3,25	6,50		_____	
	43	39	8	1,32	51,48	4		
	44	4	12	5,60	22,40		_____	
	45	4	16	4,90	19,60		_____	
	46	4	16	3,75	15,00		_____	
	47	4	16	3,25	13,00		_____	
	48	58	8	1,32	76,56	4		
	49	4	12	2,90	11,60		_____	
	50	8	12	2,20	17,60		_____	
	51	4	12	1,80	7,20		_____	
	52	24	8	1,32	31,68	4		
	53	4	16	8,40	33,60		_____	
	54	4	16	2,50	10,00		_____	
	55	8	16	7,20	57,60		_____	
	56	8	16	3,25	26,00		_____	
	57	100	8	1,32	132,00	4		
	58	2	16	8,35	16,70		_____	
	59	2	16	2,20	4,40		_____	
	60	2	16	7,15	14,30		_____	
	61	2	16	3,80	7,60		_____	
	62	2	16	3,25	6,50		_____	
	63	43	8	1,32	56,76	4		
	64	2	16	8,20	16,40		_____	
	65	2	16	3,55	7,10		_____	
	66	2	16	7,00	14,00		_____	
	67	2	16	3,80	7,60		_____	
	68	2	16	3,25	6,50		_____	
	69	43	10	1,36	58,48	4		
	70	12	12	2,70	32,40		_____	
	71	24	12	1,90	45,60		_____	
	72	12	12	1,50	18,00		_____	
	73	60	8	1,22	73,20	4		
	74	2	12	5,45	10,90		_____	
	75	4	12	4,95	19,80		_____	
	76	28	8	1,32	36,96	4	